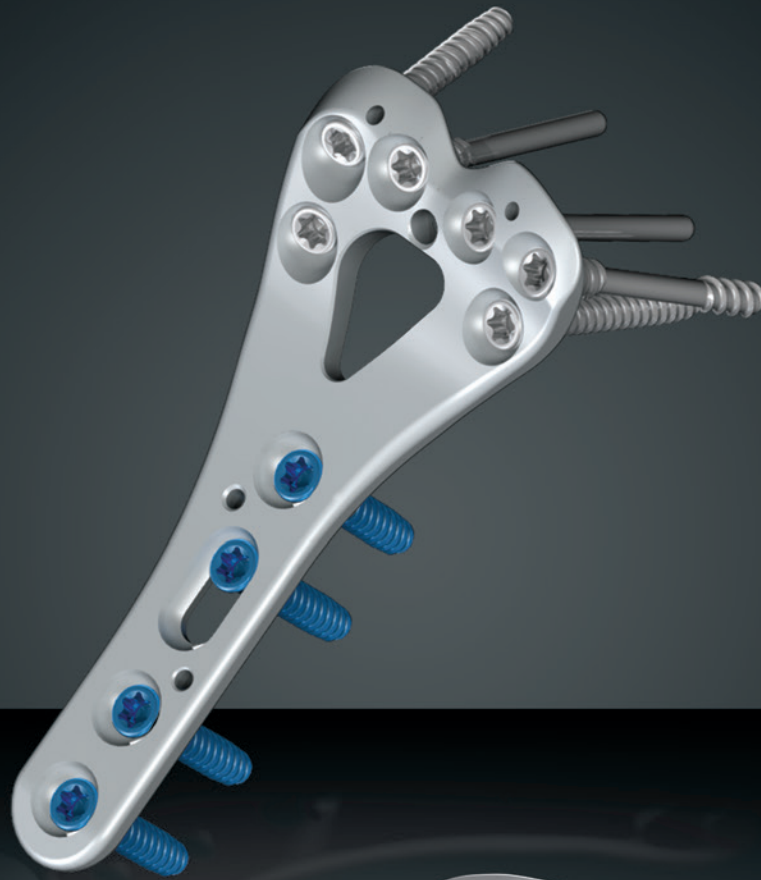
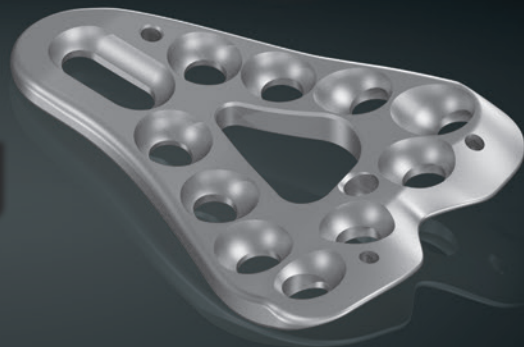


EXTREMILOCK™

Wrist Plating System



Volar Plating



Rethinking Possibilities, Reshaping Lives

EXTREMILOCK WRIST PLATING SYSTEM

ExtremiLock Wrist Plating System includes the latest in variable angled locking screw and plate technology to treat fractures of the distal radius. The system features a variety of screw fixation options incorporating double-lead threads which allow for faster insertion and reduced O.R. time. Specialized instrumentation complete this comprehensive system which allows for multiple intra-operative options to treat the fracture.

System Advantages

Universal Screw Holes – Each circular plate hole can accommodate any 2.4mm or 2.7mm diameter locking and non-locking screw allowing for a variety of options to treat the fracture or a single screw diameter to limit the amount of instrumentation needed.

Anatomic Plate Design – ExtremiLock Wrist plates are designed to match the contour of the bony anatomy. Smooth surface and rounded edges minimize any soft tissue irritation. Chamfered tips assist with submuscular plate insertion.

Cannulated Screw – The cannulated double lead locking compression screw allows for accurate placement by using a guide wire. Designed to fixate fractures through a universal screw hole or as a compression screw outside of the plate.

Short Volar Plate

The short volar plate incorporates column screws providing more fixation points over a shorter plate distance. The plate can be used for common fractures, including fractures at the epiphyseal/metaphyseal junction using a smaller incision disrupting less soft tissue than a standard volar plate.



PLATE FEATURES

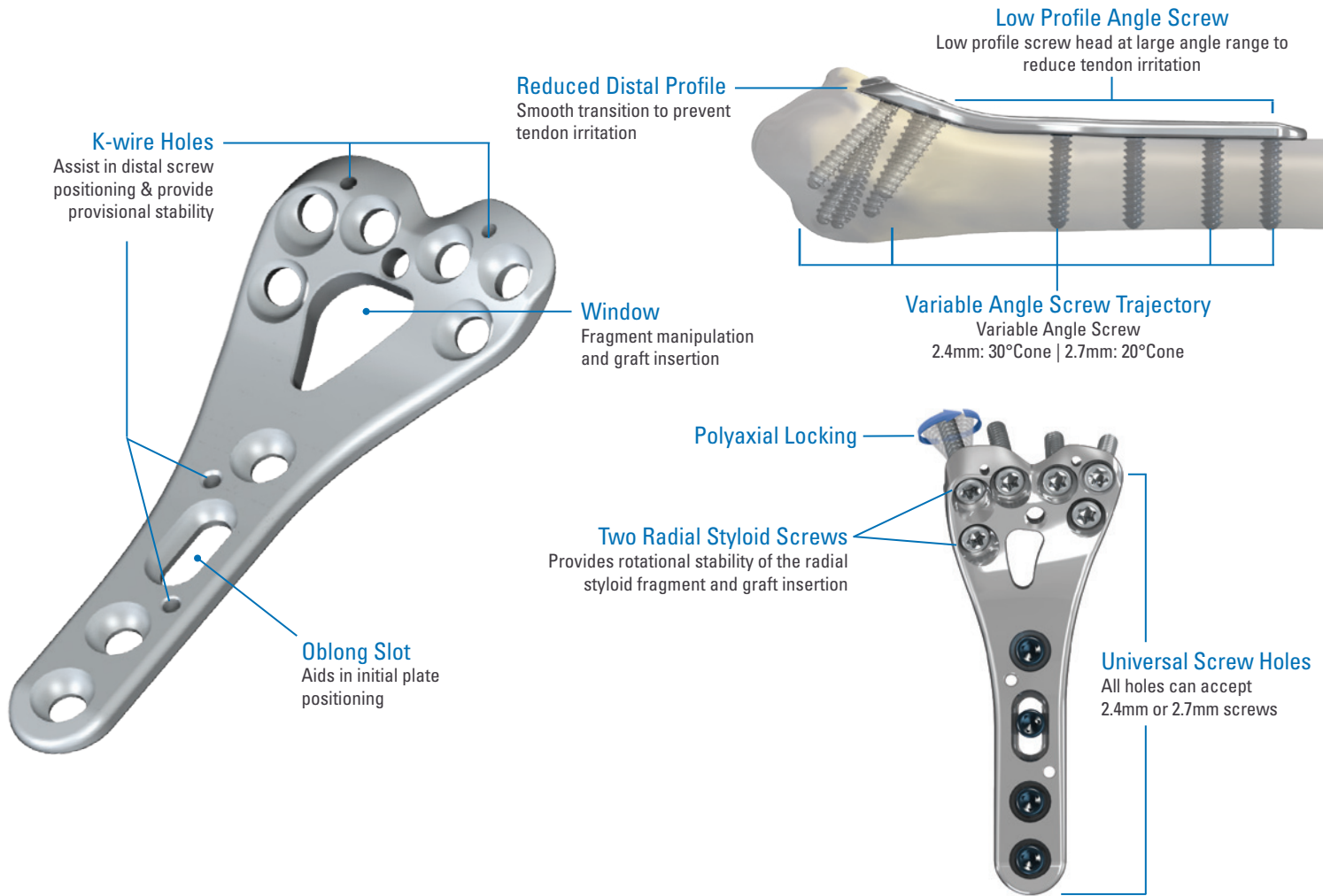


PLATE OPTIONS



Radial Styloid Plate



Volar Radial Column Plate



Volar Intermediate Column Plate

SCREW OPTIONS



354-18xx - 2.4mm Partially Threaded Locking Screw



358-24xx - 2.4mm Cortex Screw



359-24xx - 2.4mm Locking Screw



349-24xx - 2.4mm Cannulated Locking Screw



358-27xx - 2.7mm Cortex Screw



359-27xx - 2.7mm Locking Screw

OsteoMed Products



Hand Plating System



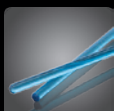
Hand Fusion System



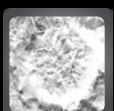
ExtremiFix Headless Cannulated Screws



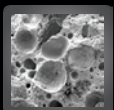
ExtremiFix Cannulated Screws



Inion



OsteoVationEX



OsteoVation QWIK



Rethinking Possibilities, Reshaping Lives

OSTEOMED

3885 Arapaho Rd.
Addison, TX 75001

Customer Service: 800.456.7779

Outside the U.S.: 001.972.677.4600

Fax: 800.390.2620

Fax Outside the U.S.: 001.972.677.4709

E-mail: customer.service@osteomed.com

www.osteomed.com

P/N 030-1985 Rev.A