

EXTREMILOCK™

Wrist Plating System



PQ Spring Volar Plating



Rethinking Possibilities, Reshaping Lives

EXTREMILOCK WRIST PLATING SYSTEM

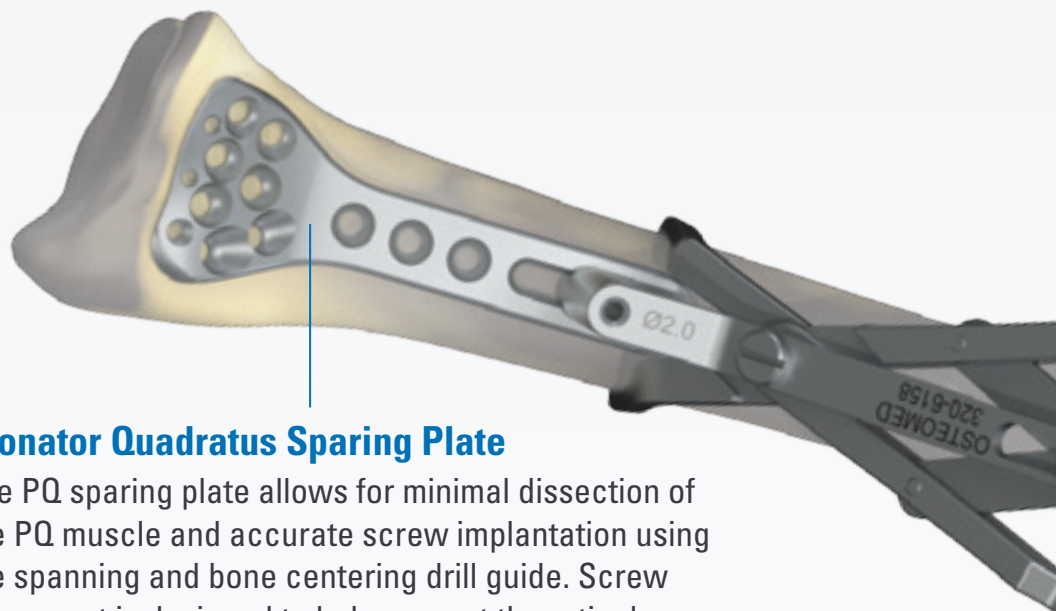
ExtremiLock Wrist Plating System includes the latest in variable angled locking screw and plate technology to treat fractures of the distal radius. The system features a variety of screw fixation options incorporating double-lead threads which allow for faster insertion and reduced O.R. time. Specialized instrumentation complete this comprehensive system which allows for multiple intra-operative options to treat the fracture.

System Advantages

Universal Screw Holes – Each circular plate hole can accommodate any 2.4mm or 2.7mm diameter locking and non-locking screw allowing for a variety of options to treat the fracture or a single screw diameter to limit the amount of instrumentation needed.

Anatomic Plate Design – ExtremiLock Wrist plates are designed to match the contour of the bony anatomy. Smooth surface and rounded edges minimize any soft tissue irritation. Chamfered tips assist with submuscular plate insertion.

Cannulated Screw – The cannulated double lead locking compression screw allows for accurate placement by using a guide wire. Designed to fixate fractures through a universal screw hole or as a compression screw outside of the plate.

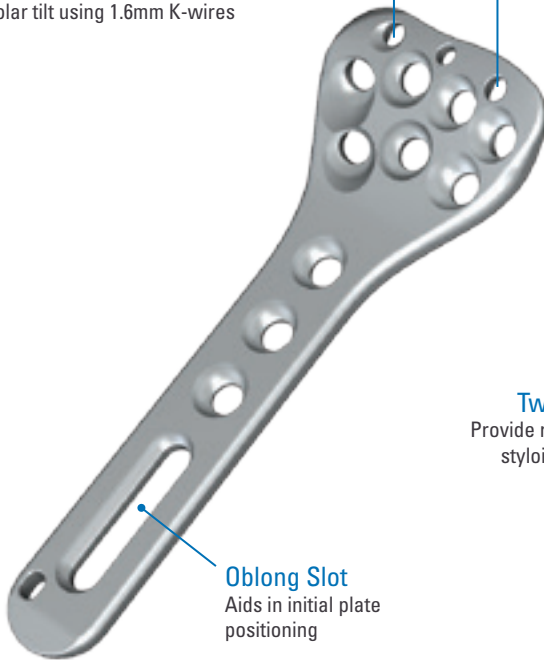


Pronator Quadratus Sparing Plate

The PQ sparing plate allows for minimal dissection of the PQ muscle and accurate screw implantation using the spanning and bone centering drill guide. Screw placement is designed to help support the articular surface for simple to complex fractures.

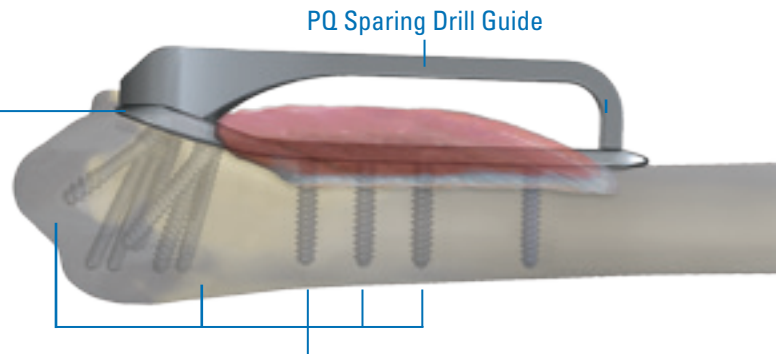
PLATE FEATURES

K-wire Holes
Allow for the adjustment of volar tilt using 1.6mm K-wires



Oblong Slot
Aids in initial plate positioning

Reduced Distal Profile
Smooth transition to prevent tendon irritation



PQ Spring Drill Guide
Variable Angle Screw Trajectory
Variable Angle Screw
2.4mm: 30° Cone | 2.7mm: 20° Cone

Two Radial Styloid Screws
Provide rotational stability of the radial styloid fragment and graft insertion

Polyaxial Locking



Universal Screw Holes
All holes can accept 2.4mm or 2.7mm screws



SCREW OPTIONS



354-18xx - 2.4mm Partially Threaded Locking Screw



358-24xx - 2.4mm Cortex Screw



359-24xx - 2.4mm Locking Screw



349-24xx - 2.4mm Cannulated Locking Screw



358-27xx - 2.7mm Cortex Screw



359-27xx - 2.7mm Locking Screw

OsteoMed Products



Hand Plating System



Hand Fusion System



CMC Fusion System



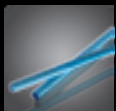
P.E.T. Device



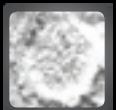
ExtremiFix Headless Cannulated Screws



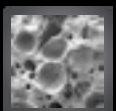
ExtremiFix Cannulated Screws



Inion



OsteoVationEX



OsteoVation QWIK



Rethinking Possibilities, Reshaping Lives

OSTEOMED

3885 Arapaho Rd.
Addison, TX 75001

Customer Service: 800.456.7779

Outside the U.S.: 001.972.677.4600

Fax: 800.390.2620

Fax Outside the U.S.: 001.972.677.4709

E-mail: customer.service@osteomed.com

www.osteomed.com

P/N 030-1998 Rev.A